



TERMS OF USE



This resource and its content is copyright of Elsa-Support Ltd.
©Elsa-Support 2021. All rights reserved.

All free products on this site are subject to a **Creative Commons Copyright Licence**. You are free to copy, distribute, display, and perform the work under the following conditions:

Attribution: You must give the original author credit - that is **Elsa-Support**, and our copyright labels must remain on the resource.

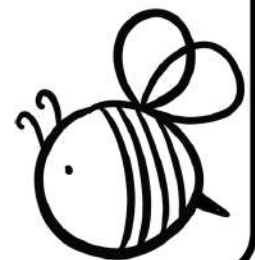
Non-Commercial: You may **not** use this work for commercial purposes. **You cannot sell this work or use it for financial gain.**

No Derivative Works: You may **not** alter, transform, or build upon this work. **You must not change our work in anyway.**

Thank you for abiding by copyright law.



www.elsa-support.co.uk





Other resources you will LOVE!



Please click the image to take you to this related and relevant resource:

Social & Emotional Support Assessments Summary

Skill	Pre-Intervention	Post-Intervention	Max. Score
Emotional Awareness	9	17	20
Friendship & Relationships	6	16	20
Growth Mindset & Beh	19	34	55
Self-esteem			
Social skill			

Social and Emotional Support Assessments

Pre and Post Intervention
-Assessment Records-

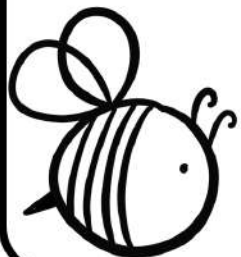
ELSA support
www.elsa-support.co.uk

©ELSA Support 2018

Comments/Notes on Impact!
Tom has improved across the board need it. He has learnt how to react settled at home with for less for group situation. His manners have

Social & Emotional Support Assessment

Can n
Can n
Can n
Can n
Can n
Behave
Relax
Can Te
Think of



www.elsa-support.co.uk



To edit this leaflet

Parts of this leaflet can be personalised. To change them just click on the text and add your details.

To change the logo 'right click on the image' and select 'change picture' you can then select your logo and replace the one that is there.

To print this leaflet

Save this file as a PDF

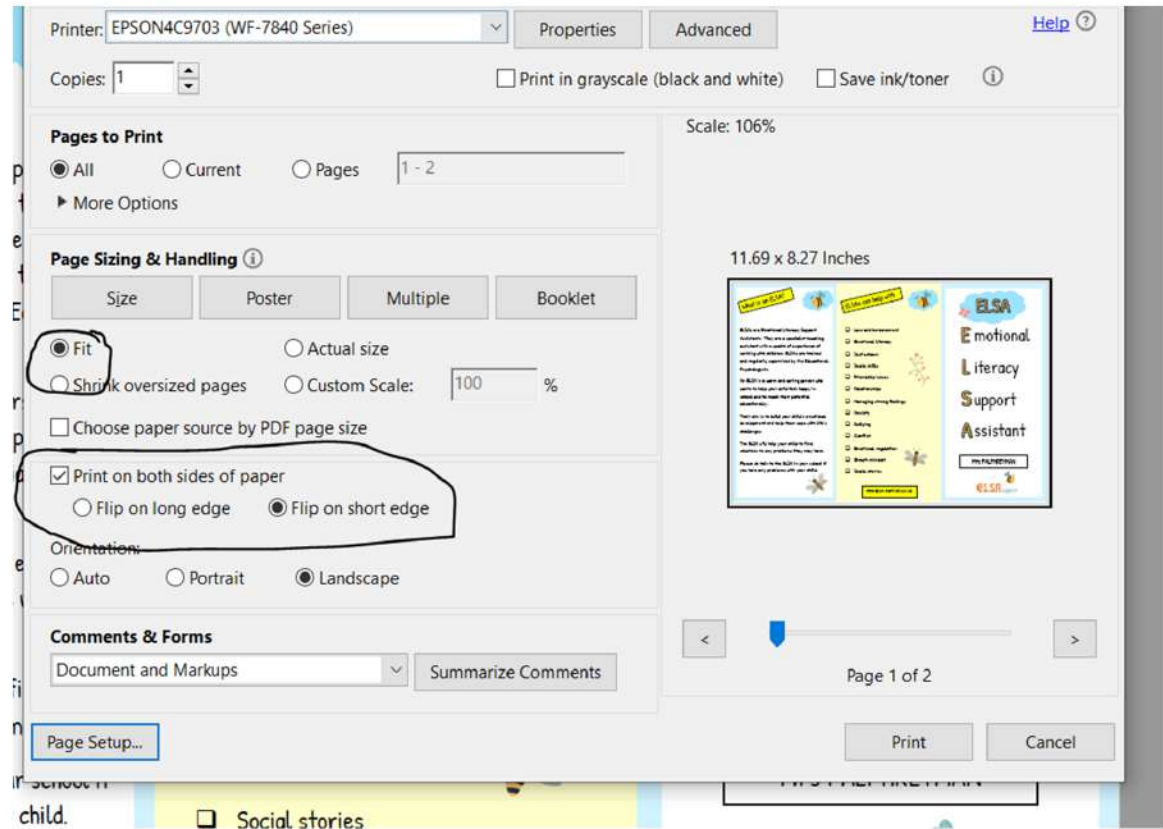
Open your PDF with Adobe

Change the size of the paper to A4

Click 'fit'

Print on both sides of paper and flip on the short edge.

Once you have printed, cut off the margins and fold into 3 using the colours to guide you



Who to contact



If you think your child could benefit from ELSA sessions then please contact

Mrs Dawes ELSA Lead

Tel. 01782 502369

Email:

St Luke's C.E. Academy

Leek Rd,

Endon,

Stoke-on-Trent,

Staffordshire,

ST9 9EB

School website address

[www.st-lukes-](http://www.st-lukes-endon.cofe.sch.uk)

[endon.cofe.sch.uk](http://www.st-lukes-endon.cofe.sch.uk)



ELSAs can help with



- Loss and bereavement
- Emotional literacy
- Self esteem
- Social skills
- Friendship issues
- Relationships
- Managing strong feelings
- Anxiety
- Bullying
- Conflict
- Emotional regulation
- Growth mindset
- Social stories



For resources go to
www.elsa-support.co.uk



ELSA



E motional

L iteracy

S upport

A ssistant

Mrs Dawes



What is an ELSA?



ELSAs are Emotional Literacy Support Assistants. They are a specialist teaching assistant with a wealth of experience of working with children. ELSAs are trained and regularly supervised by the Educational Psychologists.

An ELSA is a warm and caring person who wants to help your child feel happy in school and to reach their potential educationally.

Their aim is to build your child's emotional development and help them cope with life's challenges.

The ELSA will help your child to find solutions to any problems they may have.

Please do talk to the ELSA in your school if you have any concerns about your child.



Individual Session



Your child will be offered 6 to 12 sessions initially and they can vary in time, according to the age of your child

The ELSA will plan their sessions for your child very carefully. The session consists of several parts.

Example lesson

Emotional check in

This is an opportunity to talk about feelings,

Main activity

The ELSA will plan the activity to a learning objective. Something your child will be able to do at the end of the session that they cannot do now. For example your child might have low self esteem so the ELSA will work on your child's strengths. The ELSA will encourage your child to talk about their talents or personal characteristics such as 'kind', 'caring', 'helpful' or 'brave'. The child may then make something to reinforce those strengths.

Relaxation

Your child will be taught a relaxation exercise to help get them ready to go back to class.

Review

Your child will be able to reflect on the session and realise they have lots of strengths and talents which will boost their self esteem.

Group Session



Your child will be offered 6 to 12 sessions initially and they can vary in time according to the age of your child

The ELSA will plan the group sessions for your child very carefully.

Emotional check in

This is an opportunity to talk about feelings,

Warm up activity

A fun game or activity to help relax your child all of the children

Main activity

This is similar to the individual session but your child will be encouraged to work with other children. This helps with co-operation, social skills, friendship and gives a sense of belonging. A learning objective will be set for the group of children which they will all be able to answer at the end of the session.

Relaxation

Your child will be taught a relaxation exercise to help get them ready to go back to class

Review

Your child will be able to reflect on the session and talk about what they have learnt.

